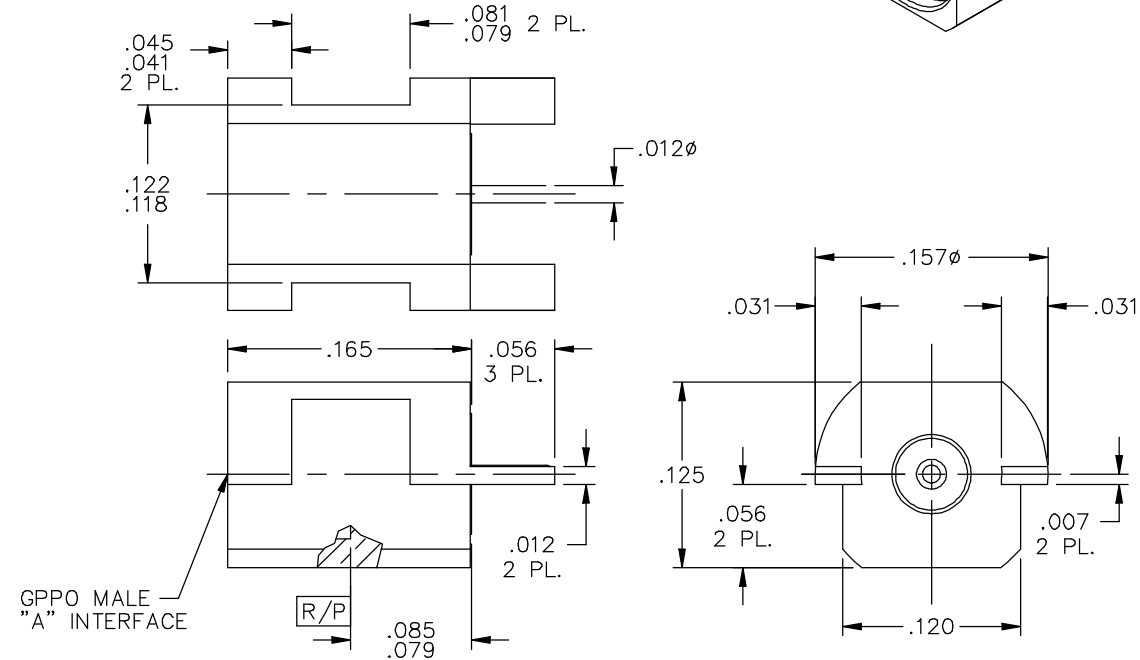
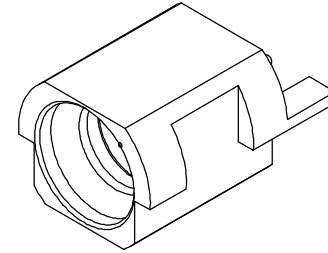


CATALOG NUMBER	"A" INTERFACE
B010-L13-02	FULL DETENT
B010-L15-02	SMOOTH BORE

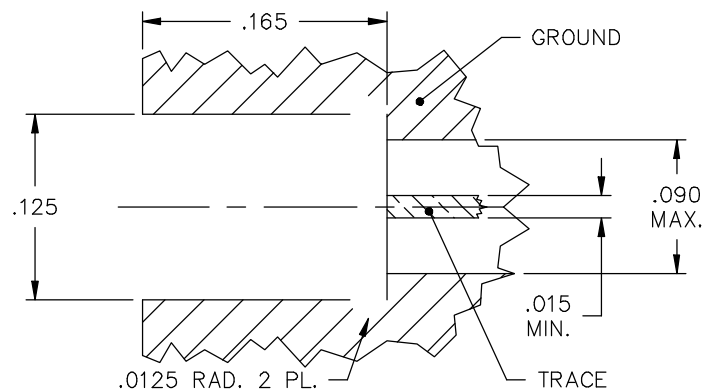
MATERIAL AND FINISH

CENTER CONTACT, HOUSING, AND BUSHING: BeCu; GOLD PLATE 5-15 MICRONS OVER NICKEL PLATE 100-200 MICRONS

DIELECTRIC: VIRGIN PTFE



GPPO MALE "A" INTERFACE



This drawing and any data contained herein is the property of Corning Gilbert Inc., and constitutes and contains proprietary and confidential information. Neither receipt nor possession of this drawing confers or transfers any right to duplicate, use or disclose any information contained herein except as expressly authorized by Corning Gilbert Inc.

GPPO MALE EDGE LAUNCH (TAB DETENT)	IDENT CODE: 82316	Corning Gilbert Inc.
	REVISION: C	
SOURCE FILE: SK-2643	DWG. NO.: OL-B010-L1X-02	ASSY. PROC.: -